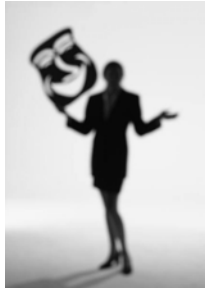


## **The Casting Couch at Covent Garden Connection**

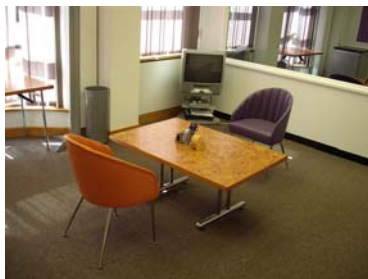


Here at **Covent Garden Connection** there are two air-conditioned studios, each with a one-way mirror allowing auditions to be viewed and heard from the 'viewing lounge'. A forerunner to Big Brother we think! We can keep you watered and fed and make you feel very at home. With a very competitive day time rate for just **£100 per hour**, plus VAT, why not call for an informal chat to discuss your requirements or to arrange to have a look around?

The auditions are recorded from a ceiling mounted static camera and are provided on DVD to take away on the day. If you want up close and personal recordings, camera equipment can be hired in or you can bring your own. If you can't be there in person, at a small additional cost, use the latest technology to transmit your pictures around the world via our web-streaming service, which can be viewed from anywhere that you have access to a computer with internet access!

**Covent Garden Connection** is an excellent venue located just south of The Strand in a quiet cul-de-sac just a few minutes walk from Charing Cross main line and Embankment Underground stations and the tranquillity of Embankment Gardens which are ideal for outside recording.

Check out [www.cgc.uk.com](http://www.cgc.uk.com) or call on 020 7839 9700 or e-mail [info@cgc.uk.com](mailto:info@cgc.uk.com) for availability.



## Reception area



This area is co-ordinated by a casting receptionist who administers all aspects of a session and has seating for approximately 14 people. Office facilities included in the hire comprise, DVD recording, use of any in-house equipment, stationery and tea, coffee and biscuits.



## STUDIO INFORMATION

### Orange Studio



Studio 6m x 5m  
Viewing room 5m x 4.5m approx with one-way viewing mirror

Static ceiling mounted camera  
Web-streaming available  
DVD / audio playback  
Wireless Internet access  
Pull down projector screen  
Refrigerators with soft drinks, wine and beers in both studio and viewing room, charged on a consumption basis



## Aubergine Studio



Studio                      5m x 4.5m  
Viewing room              4.5m x 3m approx with one way viewing mirror

Static ceiling mounted camera  
DVD / audio playback  
Wireless Internet access  
Pull down projector screen  
Refrigerators with soft drinks, wine and beers in both studio and viewing room, charged on a consumption basis



## Location



We are located close to Trafalgar Square, The Strand, and are approximately a 10 minute walk south of Covent Garden Piazza.

### Tube Travel

Charing Cross and Embankment are the closest underground stations, approx. 150 metres away. **Covent Garden station is not our nearest and is a good 10 minute walk south of the piazza.**

### Train Travel

Charing Cross is the closest, approx. 150 metres away. Waterloo Station is also in the vicinity but is a good 15 minute walk away, on the south side of the river.

### Parking

Pay by Phone parking bays are located on John Adam Street, Adam Street and other surrounding roads. There is fee paying underground car parking at the Adelphi Car Park, located just off Savoy Place. After 6.30pm free parking is available on single yellow lines. Please be aware of local Parking restrictions.

### Access

We are on the 2nd floor and entry is either via the stairs or lift. Disabled toilet facilities are on the lower ground floor accessed via the lift.



## How to find us



York Buildings is a pleasant little cul-de-sac just south of the Strand. We are approx. a two minute walk from Charing Cross main line station, Charing Cross or Embankment tube stations.

### **Driving & Walking along the Strand** {heading towards Trafalgar Square}

Continue past The Savoy, turn left into Adam Street and then right into John Adam Street, York Buildings is the second road on your left.

### **Driving along the Strand** {heading towards Aldwych}

Turn right into Adam Street {opposite Strand Theatre} and then right into John Adam Street, York Buildings is the second road on your left.

### **Walking along the Strand** {heading towards Aldwych}

Turn right into Villiers Street, beside Charing Cross Station, first left into John Adam Street {when you reach The Bell & Compass Public House}, York Buildings is the second road on the right.

### **Walking From Embankment Tube**

Exit heading towards The Strand (Villiers Street exit), walk up Villiers Street towards Charing Cross, turn right into John Adam Street {when you reach The Bell & Compass Public House}, York Buildings is the second road on the right.

20 York Building is about 25m down on the left hand side, our intercom buzzer is the fourth from the bottom and we are situated on the second floor and can be accessed via a lift or stairs.

**PLEASE NOTE Covent Garden and Leicester Square stations are also nearby but are not our nearest tube stations. Both are a good ten-minute walk away.**



## Catering & Refreshments



We offer an appetising selection of catering options from a cold meat platter or hot food delivered direct to your viewing room to cheese & biscuits, fruit baskets, sandwiches or pastries for a lighter bite.

Each room has a fully stocked fridge with a selection of beers, wines, soft drinks, water and juices that is charged on a consumption basis.

We are always happy to arrange your food requirements; all the items we offer are freshly prepared to order and subject to availability and seasonal variations.

### **Sandwiches** - £5 per head

A selection of delicious fillings including:

Meat:

Chicken & Stuffing

Prawn & Mayo

Vegetarian:

Cheese & Salad

Egg & Tomato

Ham Cheese & Salad

Traditional Ploughman's

**Cold Platters** - £20.00 per platter, offering a choice of **either** a cold meat or a Cheese selection (each platter serves 4 people)

- ❖ Meat Platter – a selection of cooked meats, including Serrano ham, chorizo, gammon and salami served with crispy French bread.
- ❖ Cheeseboard – a variety of English and Continental cheeses served with an assortment of mouth-watering biscuits.

### **'Some like it hot'**

A selection of tasty dishes from Asia to Europe - from sushi, satay and curries to pasta and pizza, all freshly prepared and delivered to your viewing room.

Simply compile a list of what you would like, listing your menu choices, the dish number, name and how many required. Pass the list onto your Hostess and your meals will be delivered in approximately one hour. Costs are similar to a local restaurant - not West End prices!

### **FRESH FRUIT BASKET** - £15 per basket

A basket of fresh seasonal fruits.

### **Pastries** - £3.50 per head

Freshly baked Danish pastries, muffins and croissants

**Please ensure we have all your catering requirements by 2.00pm the working day prior to your booking.**

***All prices shown are exclusive of VAT***

**Please note the above is subject to availability / seasonal variations**



## RATE CARD



### **Auditions**

£

|                                   |     |
|-----------------------------------|-----|
| Rate per hour (daytime until 5pm) | 100 |
| Rate per hour (evening from 5pm)  | 180 |
| Rate per hour (weekend)           | 220 |

#### *Above inclusive of:*

- DVD recording
- Hosting
- Use of all in-house equipment
- Tea/Coffee & biscuits
- Stationery

### **REFRESHMENTS**

£

|                       |                              |
|-----------------------|------------------------------|
| House wine            | 12.00 per bottle             |
| Canned / Bottled beer | 3.00 per bottle              |
| Soft drinks           | 1.50 per can                 |
| Bottled water         | 2.50 per bottle              |
| Meat Platter          | 20.00 per platter {serves 4} |
| Cheeseboard           | 20.00 per platter {serves 4} |
| Sandwiches            | 5.00 per head                |
| Pastries              | 3.50 per head                |
| Fruit Basket          | 15.00 per basket             |
| Hot Food              | Available daily to order     |

### **ADDITIONALLY**

£

|                 |                                      |
|-----------------|--------------------------------------|
| Photocopying    | 0.10 per A4 copy<br>0.20 per A3 copy |
| DVD duplication | 12.00 per copy                       |

### **POSTPONEMENT / CANCELLATION CHARGES**

#### *Working Days*

#### *\* Postponement*

#### *Cancellation*

|                |     |      |
|----------------|-----|------|
| 24 hours       | 75% | 100% |
| 2 - 3 days     | 50% | 75%  |
| 4 - 7 days     | 30% | 60%  |
| 8 or more days | 20% | 40%  |

## The Casting Couch at **Covent Garden Connection**

# Terms & Conditions

We cannot accept responsibility for delays caused by, or as a result of adverse weather condition, transport difficulties, industrial action, or any other circumstances beyond our control

We cannot accept liability for loss or damage to client's property or stored materials unless caused by negligence.

We shall under no circumstances be liable for failure or defective working of audio or visual equipment or any consequential loss or cost incurred.

The hirer / occupants of the facility will be responsible for any damage caused to any of our equipment / facility contents and will be liable for any repair / replacement costs incurred.

Recording will be provided on DVD as standard.

Web-streaming is provided by 'Stream Team' and is only available when booked in advance in conjunction with a confirmed studio/facility booking. Where 'streaming' is requested/provided all 'Stream Team' terms and conditions apply - we cannot accept responsibility for failure or defective working of equipment or any consequential loss or cost incurred.

Additional hours will be charged (to the nearest 15 minutes) at £100 per hour before 5pm and £180 per hour after. Use of any additional studios/rooms will be charged at the appropriate hourly rate.

Postponement and cancellation charges are payable as a percentage of the Studio Hire fee charged (plus VAT) depending on the number of working days notice given:

| Notice                 | Cancellation | Postponement * |
|------------------------|--------------|----------------|
| 24 hours               | 100%         | 75%            |
| 2 - 3 working days     | 75%          | 50%            |
| 4 - 7 working days     | 60%          | 30%            |
| 8 or more working days | 40%          | 20%            |

\* Postponement charges will only apply if the booking is re-confirmed within 4 weeks of the original booking date.

Terms of Payment are 7 days from date of invoice.

All prices are subject to VAT at the current rate.

These Conditions supersede all previous Conditions.

Updated 05/09